



# OPERA

## ARMCHAIR

Small armchair with a structure in plywood panels covered by polyurethane foams with cellulose wadding external layer. All the polyurethane foams used are top quality and at different density; they are secured directly on to the elastic belts. Moka oak wooden base. Piping included. Made by Oasis.

Upholstery	Fabric and Leather	
Structure	Plywood panels covered by foams	
Dimensions	W22.4" x D24.4" x H27.1"	

# MB

COLLECTION

## VELVET



T101B



T102B



T103B



T104B



T105B



T106B



T107B



T108B



T109B



T110B



T111B



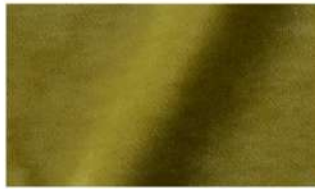
T112C



T113C



T114C



T115C



T116C



T117C



T118C



T119C



T120C



T121C



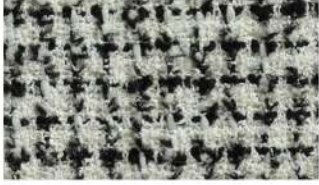
T122C

# MB

COLLECTION

MARIE BURGOS COLLECTION

## PATTERNED FABRIC



T142G - Black



T165D - Grey

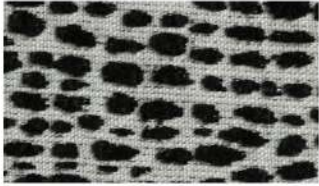


T171D - Beige

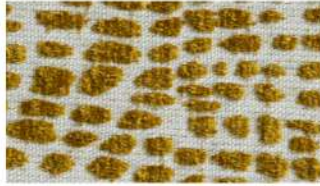


T181D - Chocolate

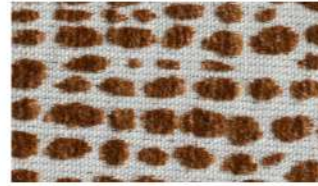
## DOTTED PATTERNED



T147C - Black



T148C - Yellow



T150C - Red



T152C - Pink



T155C - White



T166C - Grey

## BOUCLE



T153G - Ivory

## LEATHER



P0011 - Chocolate



P0012 - Cream



P0021 - Cafe



P0028 - Terracotta

MB

COLLECTION

WOOD

MARIE BURGOS COLLECTION



Moka Oak



Sand Oak



Black Oak



Walnut



Lacquered  
Antique Gold



Lacquered  
Bronze