



SATEN

ARMCHAIR

The Saten chair, with its rounded, fluid forms, evokes a typically 1950s mood and feel. Upholstered in non-removable fabric, it is instantly recognisable by the lattice design of its stitching. The structure itself can be in natural or lacquered wood and the covering in a plethora of fabrics from the most traditional to the most modern. Made by Oasis.

Upholstery

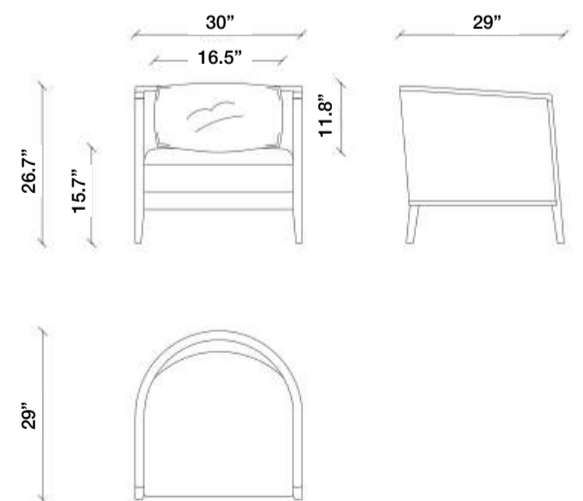
Fabric and Leather

Structure

Natural or lacquered wood

Dimensions

W30" x D29" x H26.7"



MB

COLLECTION

VELVET



T101B



T102B



T103B



T104B



T105B



T106B



T107B



T108B



T109B



T110B



T111B



T112C



T113C



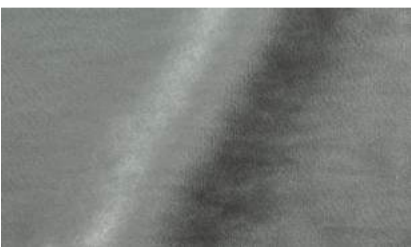
T114C



T115C



T116C



T117C



T118C



T119C



T120C



T121C



T122C

MB

COLLECTION

MARIE BURGOS COLLECTION

PATTERNED FABRIC



T142G - Black



T165D - Grey

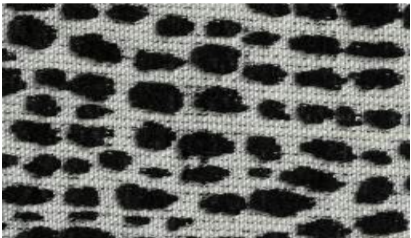


T171D - Beige

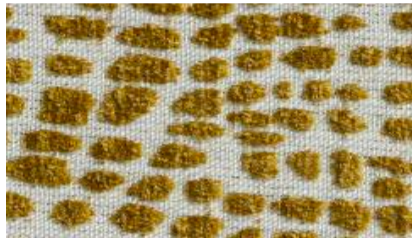


T181D - Chocolate

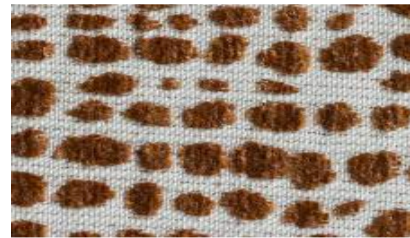
DOTTED PATTERNED



T147C - Black



T148C - Yellow



T150C - Red



T152C - Pink



T155C - White



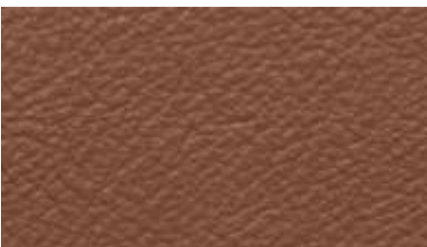
T166C - Grey

BOUCLE

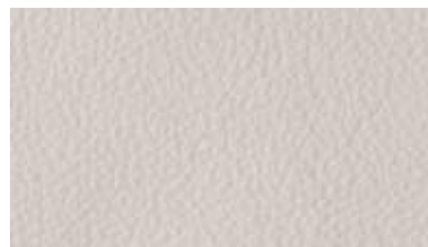


T153G - Ivory

LEATHER



P0011 - Chocolate



P0012 - Cream



P0021 - Cafe



P0028 - Terracotta



COLLECTION

WOOD



Moka Oak



Sand Oak



Black Oak



Walnut



Lacquered
Antique Gold



Lacquered
Bronze

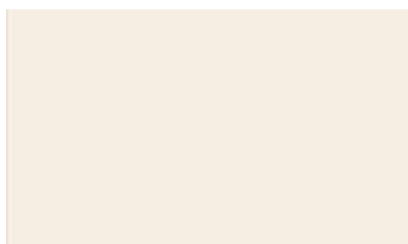
GLOSSY LACQUERED FINISHING



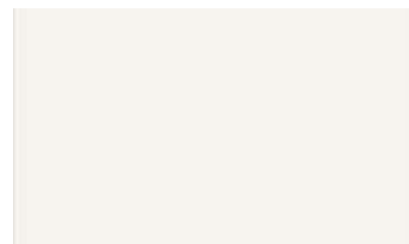
G0083 - Beige Arizona



G0054 - Tortora Elegance



G0051 - Bianco Latte



G0050 - Bianco Ghiaccio



G0062 - Nero Lavagna



G0059 - Grigio Elegance



G0056 - Caffè Elegance



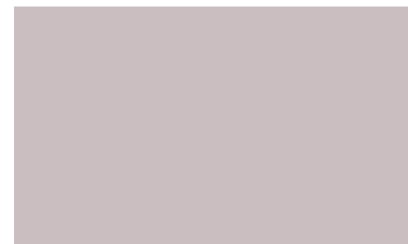
G0079 - Trim Grey



G0072 - Ruggine



G0075 - Orchidea



G0074 - Ciclamino



G0064 - Verde Muschio



G0068 - Blu Notte

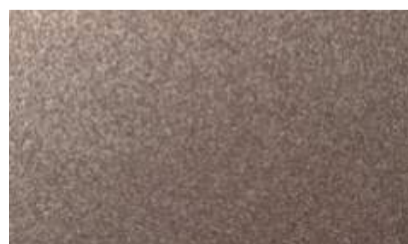


G0069 - Blu Oltremare

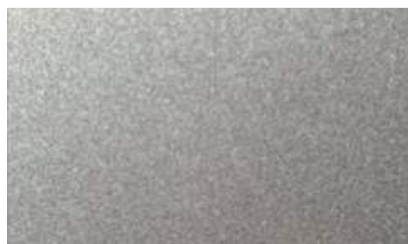
METALLIC LACQUERED FINISHING



D0001 - Prosecco Metal



D0003 - Bronza Metal



D0005 - Light Grey Metal