



# MUFFIN

POUF

Ottomans have a cylindrical form, available in different sizes.  
 The upholstered structure is covered in fabric or leather.  
 The structure is made of plywood panels covered by polyurethane foams at high density.  
 Made by Oasis.

Upholstery	Fabric and Leather		
Structure	Plywood panels covered by foams		
Dimensions	W15.7" x D15.7" x H16.5" W15.7" x D15.7" x H23.6"		

# MB

COLLECTION

## VELVET



T101B



T102B



T103B



T104B



T105B



T106B



T107B



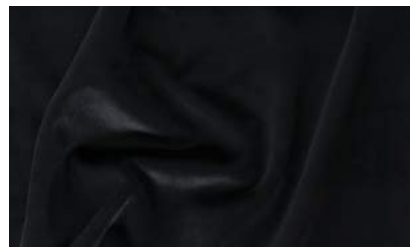
T108B



T109B



T110B



T111B



T112C



T113C



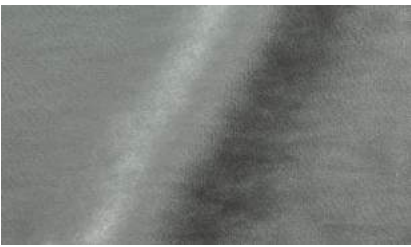
T114C



T115C



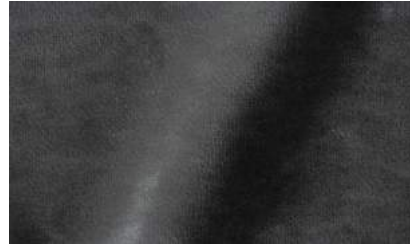
T116C



T117C



T118C



T119C



T120C



T121C



T122C



# MB

COLLECTION

MARIE BURGOS COLLECTION

## PATTERNED FABRIC



T142G - Black



T165D - Grey

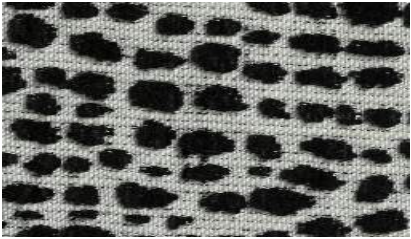


T171D - Beige

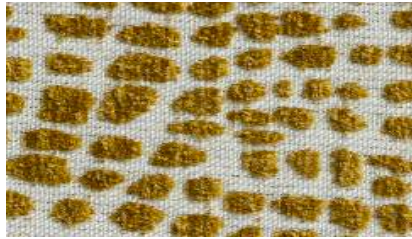


T181D - Chocolate

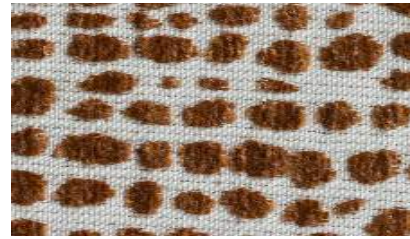
## DOTTED PATTERNED



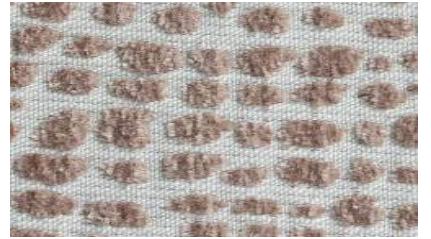
T147C - Black



T148C - Yellow



T150C - Red



T152C - Pink



T155C - White



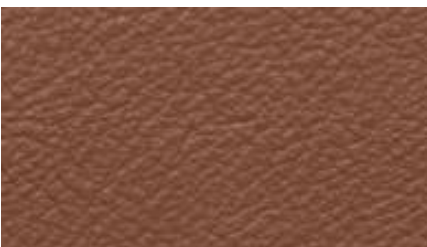
T166C - Grey

## BOUCLE

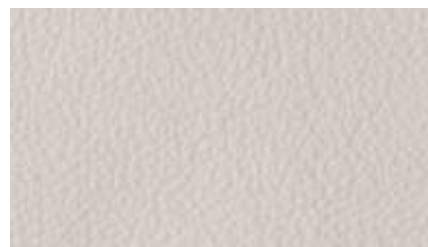


T153G - Ivory

## LEATHER



P0011 - Chocolate



P0012 - Cream



P0021 - Cafe



P0028 - Terracotta