



## MILO BEAN OTTOMAN

### MATERIALS

Solid oak foot

### STRUCTURE

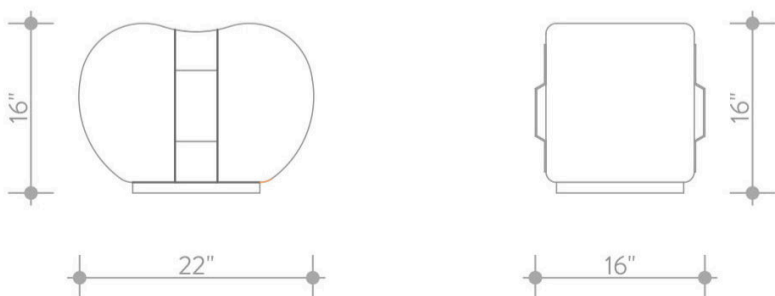
Handcrafted wooden frame

### FINISH

Variety of fabrics with leather handle. COM available

### DIMENSIONS

Width: 22"  
Depth: 16"  
Height: 16"



**PERFORMANCE VELVET**



Fine - Nuage



Fine - Dune



Fine - Wood



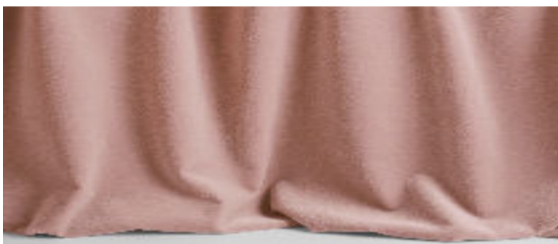
Fine - Safran



Fine - Dijon



Fine - Kiwi



Fine - Powder



Fine - Wine



Fine - God Save The Queen



Fine - Duck



Fine - Méditerranée



Fine - Simple Black

**PERFORMANCE CHENILLE VELVET**



Freddo - Pearla



Freddo - Orzo



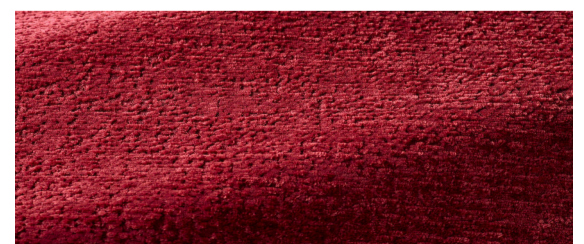
Freddo - Duna



Freddo - Ambra



Freddo - Pesca



Freddo - Mirtillo

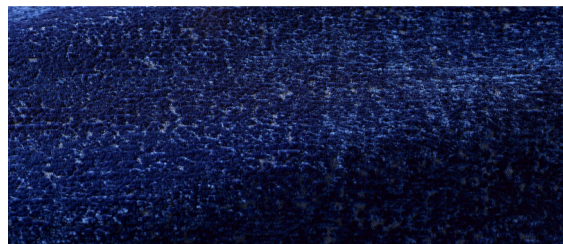
# MB

COLLECTION

MARIE BURGOS COLLECTION



Freddo - Antica



Freddo - Marina



Freddo - Corteccia

## PREMIUM BOUCLE WOOL



Opio - Naturel



Opio-Orzo



Opio- Ciottolo



Opio- Ambra



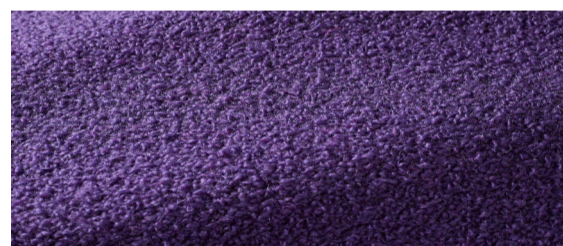
Opio- Kiwi



Opio- Eucalipto



Opio- Azalea

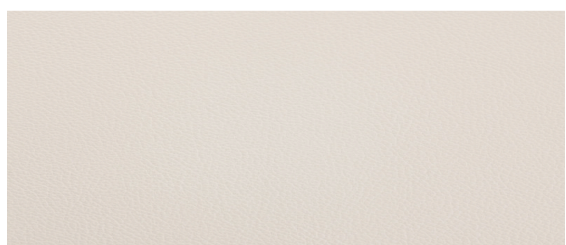


Opio- Porpora



Opio- Indaco

## HANDLES LEATHERS



Shelly - White



Old English - Saddle



Belmont - Tobacco